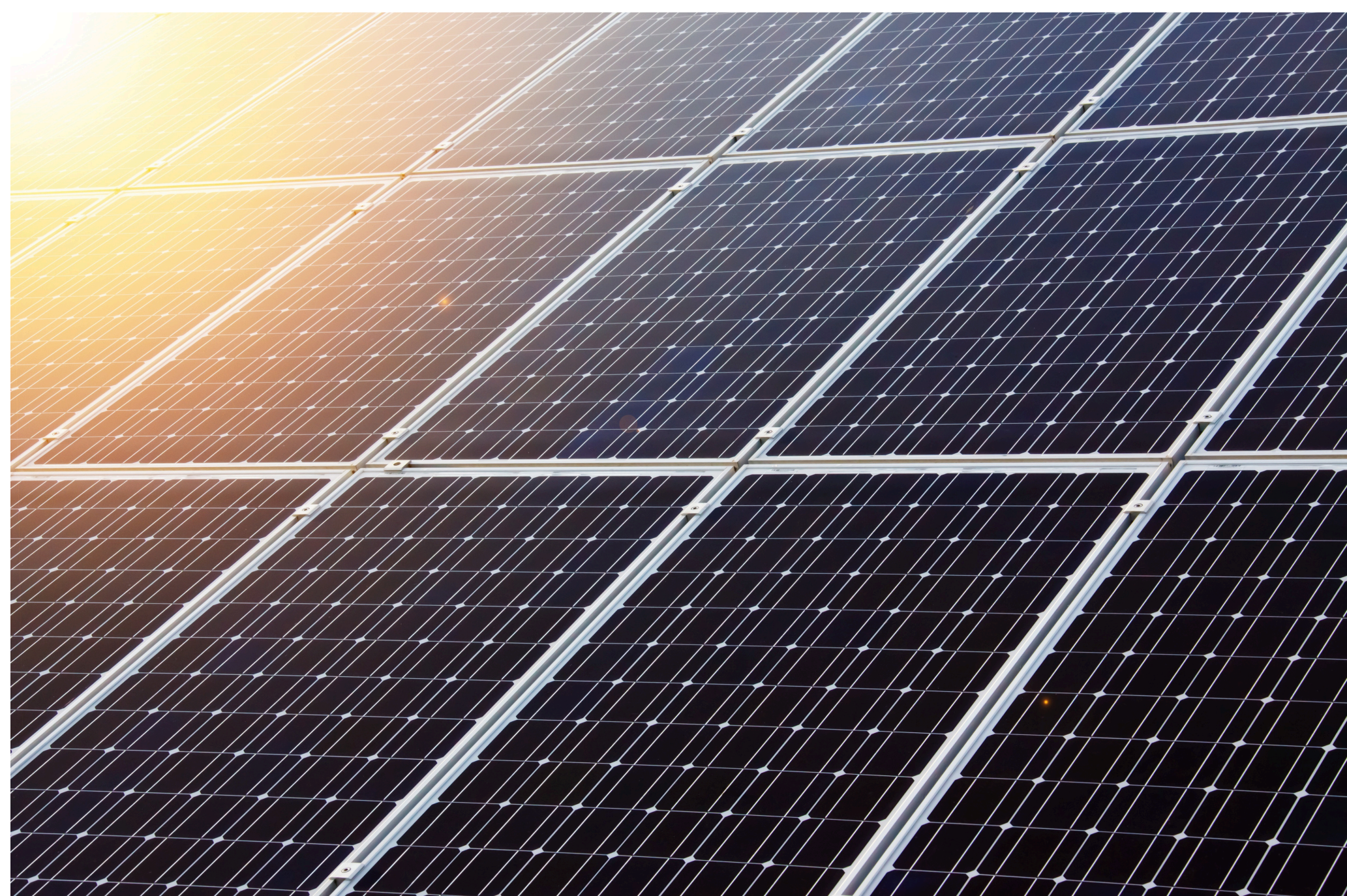


COMMERCIAL PACE | CASE STUDY

PORTER FARMS (MERCER COUNTY, MO)

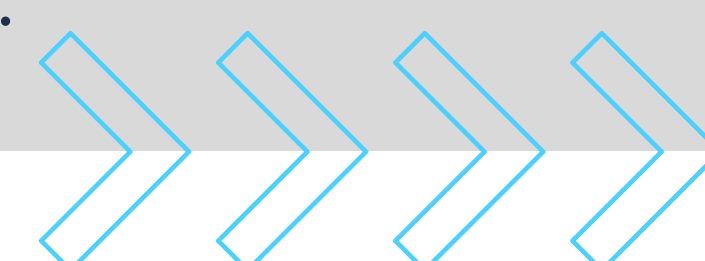


Project Type: Agricultural
C-PACE Amount: \$400,000
Loan Term: 20 years
Location: Mercer County, MO
Measures: Solar PV
Lender: Missouri Green Banc
Program: Missouri Clean Energy District (MCED) FASTPACE Program

HIGHLIGHTS

Missouri Clean Energy District funded this C-PACE transaction through the U.S. Department of Agriculture (USDA) Intermediary Relending Program and using Allectrify's FASTPACE platform.

- The \$400k C-PACE financing for Porter Farms is the first deal closed on Allectrify's FASTPACE platform.
- The project will also benefit from the Investment Tax Credit, utility rebates, and a grant from the USDA's Rural Energy for America Program.
- The project showcases how diverse sources of capital can be leveraged to support clean energy measures and how state & local entities are at the leading edge of implementation.



THE PROJECT

Porter Farms is a family farm in Mercer County, MO. The C-PACE financing funds solar PV installation at various locations across the property and associated sites, lowering electricity bills and providing other financial benefits. In addition, by using a buffer strip to contain erosion, the systems did not reduce crop ground.

*"For over 100 years, the Porter family has grown corn and soybeans in northern Missouri. Our new solar PV system will help us lower our energy costs and stay competitive. **The FASTPACE Program was good for my family and our business.**" - Lori Porter*

C-PACE MADE SIMPLE

Allectrify enables every lender in the country to be a C-PACE lender, quickly and easily, at no cost to the lender and with reduced transaction costs for borrowers. Allectrify's FASTPACE platform includes streamlined documents, transaction tools, and back-office support.

For property owners and developers, our network of lenders provides access to lower cost capital and more efficient execution for C-PACE deals of all sizes, from \$100K on up.

